

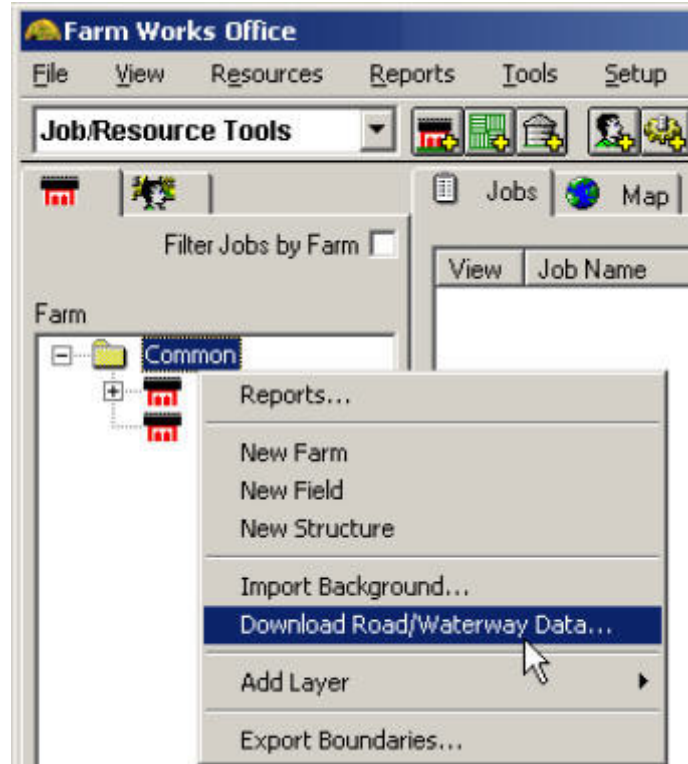
Importing Roads and Waterways

Importing roads and waterways into Farm Site serves two purposes: It makes it easier to know where to draw your fields, and it adds GPS coordinates to the maps you draw by hand. The easiest way to add roads and waterways is to download them from the World Wide Web. An Internet connection is all that is needed.

To add the roads and waterways to Farm Site:

1. Verify that your computer is connected to the Internet.

2. Select the **Farm** tab, right click the folder at the top of the **Farm** box, and select **Download Road/Waterway Data** on the shortcut menu.



3. In the **Download From Web** dialog box, select the correct state in the **Region** list and the appropriate county in the **Section** list, and then select the check boxes for the items you want the program to display—choose from the **Roads and Trails**, **Waterways**, **Railroads** and **Misc. Transportation** check boxes. If information is not available, the box will not be available.



4. Select **OK** and Farm Site adds an icon for each of the roads and waterways to the **Farm** box. **Show Backgrounds in Land Areas...** has to be checked under the **View** menu, for the icons to show up.

5. Double click each background layer icon to display the roads and waterways in the **Map** box. Red is the default color for roads, black for railroads, and blue for waterways.



6. To locate a specific road or waterway by color:

- Select the **Layers** tab.
- Double-click the roads or waterways layer in the **Displayed Layers** box to move it to the top of the box (this makes the layer active).
- Select **NAME** in the **Views** box (Farm Site changes the colors of the roads based on their name, as shown in the **Legend** box).

7. You can also find a specific road or waterway by selecting the **Information** tab and selecting a road or waterway in the **Map** box.