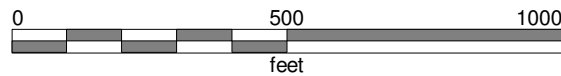
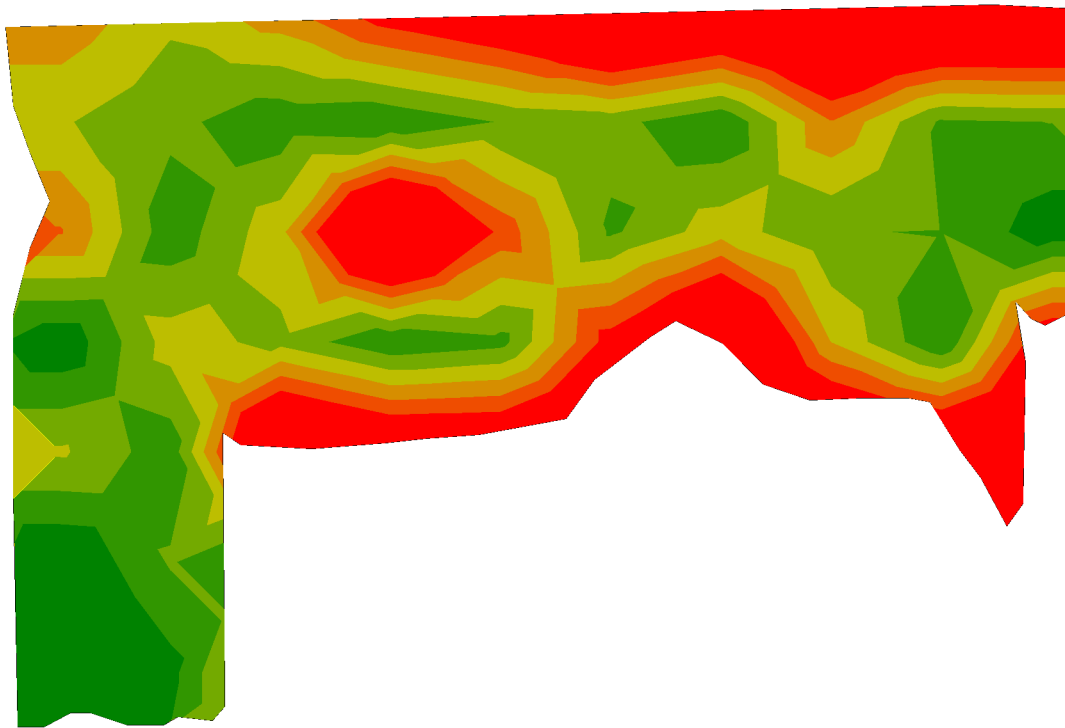


Matt#3 - 2005 Corn: Harvesting Dry Yield



Farm: Ridenour Farm
Field: Matt#3
Crop: 2005 Corn
Name: agl_2005180552_05101901_
Type: Harvesting
Area: 28.59 ac
Start Date: 10/19/2005 12:20 PM
End Date: 10/19/2005 8:52 PM
Job Hours: 8.5 hr
Harvest: 5980.707 bu
Min: 10.1 bu/ac
Max: 512.5 bu/ac
Avg: 168.8 bu/ac

Above 199.9 bu/ac	2.39 ac	[Bar]
182.0 - 199.9 bu/ac	5.46 ac	[Bar]
164.0 - 181.9 bu/ac	9.26 ac	[Bar]
146.0 - 163.9 bu/ac	6.52 ac	[Bar]
128.0 - 145.9 bu/ac	3.77 ac	[Bar]
110.0 - 127.9 bu/ac	2.60 ac	[Bar]
Below 110.0 bu/ac	6.18 ac	[Bar]

