

Farm Works™ Mobile allows you to collect information from the field and sync with your desktop software program so that critical decisions can be made about your operation. Mobile is designed for both farmers and service providers and installs on any field computer with Windows Mobile®, Windows® XP, 7, or 8.

### Key Features

- Enter field records and view historical information on the go.
- Map field boundaries, drainage lines, pivots, ditches, and other features with or without GPS.
- Utilize grids or management zones for soil sampling.
- Record scouting information using customizable templates or pick lists.
- Compatible with a variety of external sensors and variable rate controllers.

### Simple User Interface

- Seamless data transfer to Farm Works Mapping desktop software using USB connection or Connected Farm™.
- Supports familiar and easy to use client/farm/field user interface.
- Automatic field finder when using GPS.
- Utilize large buttons on the screen for easy selection.
- Import/export your data in shapefile format to work with other software solutions.

### Office to Field Data Exchange

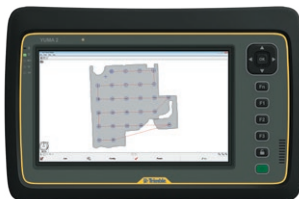
Connected Farm simplifies information management by transferring soil samples, scouting notes, boundaries, prescription maps and more between the office and field using wireless technology. Using Connected Farm allows quicker access to information, resulting in better farm management decisions.



JUNO 3 HANDHELD



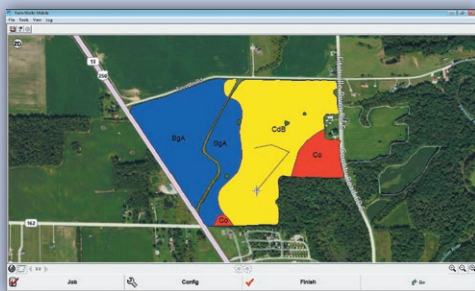
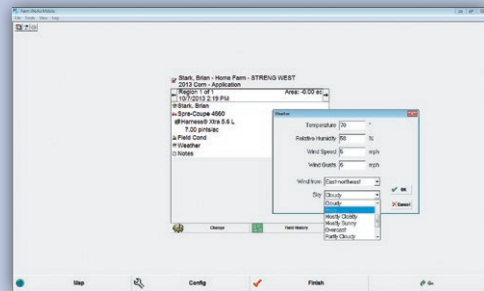
JUNO T41™ HANDHELD



YUMA 2 RUGGED  
TABLET COMPUTER

## Field Records

- Enter field records on the go.
- View historical records for each field.
- Data entry can work independently or in conjunction with a GPS receiver to track planting dates, chemical usage, scale tickets, hybrid/variety location, and more.

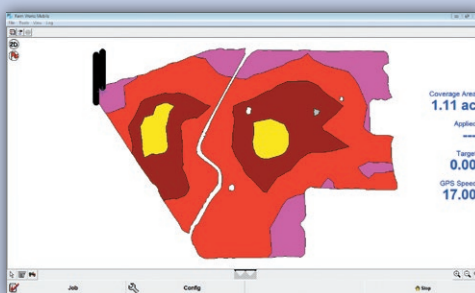
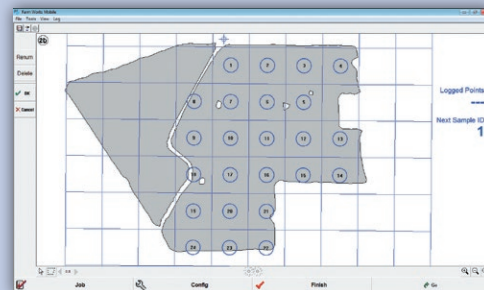


## Mapping and Scouting

- Map field boundaries, drainage lines, pivots, ditches, and other features with or without GPS.
- View any number of background maps.
- Record scouting attributes such as weed and insect types, notes, digital images from a camera, and more.

## Soil Sampling

- Utilize grids or management zones.
- Use the navigation line to automatically connect the target points in the order they are numbered.
- Navigate to any point of interest using the compass or a 3D view of the map.



## External Sensors and Variable Rate Application

- Control more than one product for variable rate application.
- Compatible with the GreenSeeker® system for logging data and real-time variable rate application.
- Creates "as-applied" data which can be downloaded into Farm Works Mapping or other third party desktop software.

**Trimble Agriculture Division**  
 10368 Westmoor Drive  
 Westminster, CO 80021  
 USA  
 +1-720-887-6100 Phone  
 +1-720-887-6101 Fax

**Trimble Navigation Limited**  
 Corporate Headquarters  
 935 Stewart Drive  
 Sunnyvale, CA 94085  
 USA  
 +1-408-481-8000 Phone  
 +1-408-481-7740 Fax

**Farm Works Sales**  
 USA +1 800-225-2848 Phone  
 Canada +1 888-309-4990 Phone  
 Worldwide +1 260-488-3492 Phone  
 Europe +44 1786-465100 Phone  
 Australia and New Zealand  
 +61 (3) 8680-7222 Phone



[www.trimble.com/agriculture](http://www.trimble.com/agriculture)