



# Connected Farm eNews

October 2015 Edition

OCTOBER 30, 2015

## In this issue:

- New Bundles Available for Connected Farm
- Free Field App Expands to Farm Works
- Updates to Farm Works Software
- Yield Monitor Preparation
- Former Owner of Farm Works Passes
- Farm Works Online Training Schedule

## New Bundles Available for Connected Farm

Two subscription bundle choices are now available to suit growers with varying farm management needs – Connected Farm™ Free and Connected Farm Standard. Free provides a perfect starting point for online data management while Standard offers more advanced functionality for a total farm management solution. Both of these bundles are compatible with Farm Works Software® solutions.



### Free Bundle:

- Synchronize resources with Farm Works
- Map field boundaries
- Upload field data from a USB
- Basic field task history
- Basic fleet management
- Profit/loss per field
- More...

### Standard Bundle:

- Everything in Connected Farm Free
- Wireless data transfer between Trimble displays and the office
- Detailed field task analysis
- Advanced fleet management
- Unlimited in-season crop health
- Unlimited UAV imagery processing
- More...

[Learn more...](#)

## Free Field App Expands to Farm Works

Get ready to use your smartphone or tablet this fall season for recording vital field activities. The latest version of Farm Works Software is fully compatible with the Connected Farm Field app. Enter harvest information, application quantities, weather conditions, and more. All collected information can be used to accurately track field profitability.



Download app from [iTunes](#) or [Google Play](#)

## Updates to Farm Works Software

The following enhancements are now available in Farm Works™ version 2015.06.

### Farm Works Mapping:

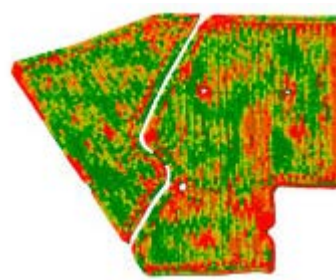
- Support for exchanging data with Connected Farm Field app
- Updated two-way synchronization with Connected Farm Scout 3.0 app
- Support for importing multiple Precision Planting \*.dat files
- Updated node edit tool



[Download update...](#)

## Yield Monitor Preparation

Don't overlook the importance of preparing your yield monitor for capturing accurate yield data. Just a few easy steps can save you time and headaches when it comes to data management. No matter what in-cab display you are using, the first essential step is correctly sending your resources from Farm Works. This can be done using a USB flash drive or wirelessly using Connected Farm Office Sync. The Farm Works resource names will appear from a drop-down list for the operator to select; in addition, streamlining the data flow when jobs are completed.



[Learn more...](#)

## Former Owner of Farm Works Passes

Norman L. Teegardin, founder of CTN Data Service and Farm Works Software, passed away on August 3, 2015. A farmer himself in the 1980's, Norm understood agriculture and how computers could benefit farming. As the Windows® operating system became popular in the early 90's, he was quick to design the first Windows based mapping and field records software for farmers. Norm never looked back as he led the agriculture industry in cutting-edge farming software for more than two decades.



[Learn more...](#)

## Farm Works Online Training Schedule

Online classes provide one hour of training with time available at the end for specific questions. Each session is \$30 and high-speed Internet is required.

Training Date	Time (EST)	Topic	Register/Info
October 7, 2015	11am	Mapping – Importing Yield Data & Imagery	<a href="#">REGISTER</a>
October 12, 2015	11am	Mapping – Using Soil Types for Sampling Grids & Management	<a href="#">REGISTER</a>
October 14, 2015	11am	Mapping – Importing Soil Lab Data & Creating Simple VRA Maps	<a href="#">REGISTER</a>
October 19, 2015	11am	Mapping – Creating Formula Based Prescription Maps	<a href="#">REGISTER</a>
October 21, 2015	11am	Accounting – Initial Setup	<a href="#">REGISTER</a>

[More classes available...](#)

## Trimble Agriculture Division

10368 Westmoor Drive  
Westminster, CO 80021  
USA

[www.connectedfarm.com](http://www.connectedfarm.com)

Stay connected with us on Facebook, YouTube, and Twitter. Be the first to receive information about new products, software updates, customer experiences, and training opportunities near you.

