



# Connected Farm eNews

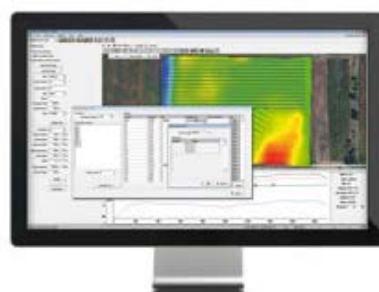
JUNE 9, 2014

## In this issue:

- Automatic Pipe Sizing Now Available
- Utilizing Wireless Data Transfer at Crossroads
- New Irrigate App for Trimble's Irrigate-IQ Solution
- Utilization Now Available in Fleet Manager
- Easier Access to Original Data Files
- Dashboard Supports TMX-2050 Display Data
- Farm Works Online Training Schedule

### Automatic Pipe Sizing Now Available

Farm Works™ Surface can now calculate diameters for all pipes within the user's drainage network based on the terrain, depth, pipe materials available for the project, and drainage coefficient, which represents how much water will be drained from a field within 24 hours.



The benefits of automatic pipe sizing are numerous including improved crop yield because the field is draining at an optimal level; decreased errors with a simplified design process that eliminates manual calculation; and cost savings since the correct size of pipe is installed in the right place in the field.

Other new Surface features include:

- Extend and connect one existing section line to another existing section line
- Clip section lines to field boundaries
- Edit multiple tile lines at once
- Improvement to overall speed

[Read the testimonial](#)

[Read the FAQ](#)

### Utilizing Wireless Data Transfer at Crossroads

Laurie Bedord, advanced technologies editor of Successful Farming, examines telematics and data sharing solutions at Crossroads Family Farms in Fortville, Indiana. Brad and Todd Stephenson explain how Trimble's Connected Farm™ solution saves them time and increases their efficiency.



[Watch the movie...](#)

### New Irrigate App for Trimble's Irrigate-IQ Solution

Monitor and control your center pivot irrigation systems in real-time from any location with a smartphone or tablet. The irrigate app helps farmers reduce trips to the fields, manage multiple pivots, and ensure the right amount of fluid is applied in the right place.



- Monitor the status (on/off), direction, heading, pressure, voltage, and material applied.
- Control the application schedule, start or stop, and the direction of each pivot.
- Switch the type of material being dispersed (water/effluent/fertigation).

[Learn more...](#)

### Utilization Now Available in Fleet Manager

The Fleet Manager service now supports fleet utilization. Fleet Utilization allows you to evaluate the performance of vehicles over a 24 hour period. The percentage of time spent in each status (working, traveling, moving, idling, etc.) is summarized in a chart to better understand which vehicles are more productive. This new reporting tool provides managers more decisive information for improving fleet productivity.



[Learn more...](#)

### Easier Access to Original Data Files

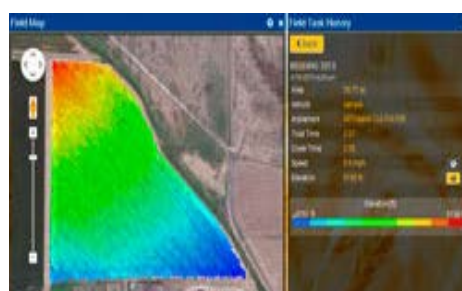
There is a new way to download your original data files from Trimble's FmX® or TMX-2050™ displays using the Office Sync service. By logging into your online Connected Farm™ account and selecting the Fleet tab, raw data files can be downloaded for use with most agricultural mapping software. If you are using Farm Works Software®, this step can be bypassed by transferring data seamlessly into Farm Works for detailed field record-keeping and profitability mapping.



[Learn more...](#)

### Dashboard Supports TMX-2050 Display Data

The Connected Farm™ dashboard continues to expand by supporting data logged with Trimble's TMX-2050™ display. Data can be viewed from any office, smartphone, or tablet once the job is completed in the field. Available data includes a coverage map along with summary details such as date and time worked, area worked, material used, and other key information. The Office Sync service is required for viewing map data on the dashboard.



[Learn more...](#)

### Farm Works Online Training Schedule

Online classes provide one hour of training with time available at the end for specific questions. Each session is \$30 and high-speed Internet is required.

| Training Date | Time (EST) | Topic   | Register/Info            |
|---------------|------------|---|--------------------------|
| June 9, 2014  | 11am       | Accounting – Initial Set Up                                 | <a href="#">REGISTER</a> |
| June 11, 2014 | 11am       | Accounting – Entering Daily Records – Payment and Purchases | <a href="#">REGISTER</a> |
| June 16, 2014 | 11am       | Accounting – Entering Daily Records – Income and Sales      | <a href="#">REGISTER</a> |
| June 18, 2014 | 11am       | Accounting – Grain Contracts & Marketing                    | <a href="#">REGISTER</a> |
| June 23, 2014 | 11am       | Surface – Working with Drainage Layers                      | <a href="#">REGISTER</a> |
| June 25, 2014 | 11am       | Surface – Using Automatic Pipe Sizing and Other Tools       | <a href="#">REGISTER</a> |

[More classes available...](#)

### Trimble Agriculture Division

10368 Westmoor Drive  
Westminster, CO 80021  
USA

[www.connectedfarm.com](http://www.connectedfarm.com)

Stay connected with us on Facebook, YouTube, and Twitter. Be the first to receive information about new products, software updates, customer experiences, and training opportunities near you.

