



## Connected Farm eNews

AUG 6, 2014

### In this issue:

- Monitor Your Crop Health
- Manage Your Farm from the Ground Up
- Farm Works Surface Now Supports All Elevation Data
- [Video] Flying the Trimble UX5 in Agriculture
- Farm Progress Countdown
- Farm Works Online Training Schedule

### Monitor Your Crop Health

The PurePixel™ solution, part of Trimble's Connected Farm™, provides farmers and their trusted advisors with a high precision source of vegetation health information throughout the growing season. Easily compare crop health from one period to the next for any field in the United States.



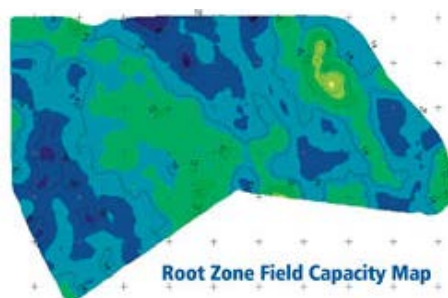
#### TRY IT FOR FREE

View up to 500 acres of May or June 2014 PurePixel maps at no cost using promo code **500MayJune** and use this to compare to current PurePixel crop health maps.

[Learn more...](#)

### Manage Your Farm from the Ground Up

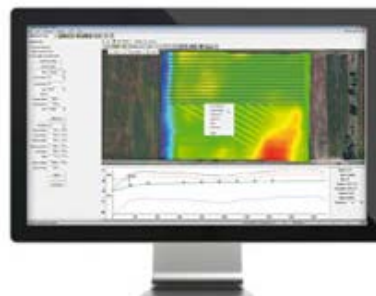
It is that time of the year to be thinking about your soils once harvest is completed. Trimble's Soil Information System™ (SIS) solution delivers the world's most accurate 3D soil data. This enhanced data provides more information about your soils over traditional soil sampling methods and can help with irrigation, drainage, fertility, and amendment applications.



[Learn more...](#)

### Farm Works Surface Now Supports All Elevation Data

Farm Works™ has released Version 2014.09. A key feature of this release is the ability to utilize 3rd party elevation data for drainage designs. Prior versions of Farm Works Surface only supported elevation data from Trimble's FmX® display or the WM-Topo™ survey system. Now you can create a drainage design from elevation collected from yield data or some other source; however, it is recommended to use elevation data that was mapped with RTK accuracy.



[Read the FAQ...](#)

### [Video] Flying the Trimble UX5 in Agriculture

The all-new Trimble® UX5 Aerial Imaging Solution is setting the standard for fast and safe aerial data collection by offering a complete system with powerful technologies such as reversed thrust & automatic failsafe procedures, a robust design, and radically simplified workflow. The UX5 comes with a camera modified to capture near-infrared (NIR) spectrum. Images from the NIR-enabled camera provide crop health indicators for use in crop scouting to detect pests, weeds, mineral deficiencies, and other potential problems in agriculture.



[Watch the video...](#)

### Farm Progress Countdown

We can't wait to show you the latest innovations in Connected Farm/Farm Works. This is a great opportunity to learn about our new solutions and updates to existing ones. We'll have live demonstrations of Farm Works Software® as well as PurePixel, Soil Information System (SIS), Connected Farm dashboard & apps, RainWave®, Irrigate-IQ™, and other yet to be announced solutions. So make sure to stop by and see us!



#### Farm Progress Show

August 26-28, 2014  
Boone, Iowa, USA  
Booth 9N (Trimble)

### Farm Works Online Training Schedule

Online classes provide one hour of training with time available at the end for specific questions. Each session is \$30 and high-speed Internet is required.

Training Date	Time (EST)	Topic	Register/Info
August 6, 2014	11am	Mapping – Importing Soil Lab Data & Creating Simple VRA Maps	<a href="#">REGISTER</a>
August 11, 2014	11am	Mapping – Creating Formula Based Prescription Maps	<a href="#">REGISTER</a>
August 13, 2014	11am	Mobile – Mapping Boundaries, Lines, & Points	<a href="#">REGISTER</a>
August 18, 2014	11am	Accounting – Initial Set Up	<a href="#">REGISTER</a>
August 20, 2014	11am	Accounting – Entering Daily Records – Payments and Purchases	<a href="#">REGISTER</a>
August 25, 2014	11am	Accounting – Entering Daily Records – Income and Sales	<a href="#">REGISTER</a>
August 27, 2014	11am	Accounting – Contracts and Marketing	<a href="#">REGISTER</a>

[More classes available...](#)

#### Trimble Agriculture Division

10368 Westmoor Drive  
Westminster, CO 80021  
USA

[www.connectedfarm.com](http://www.connectedfarm.com)

Stay connected with us on Facebook, YouTube, and Twitter. Be the first to receive information about new products, software updates, customer experiences, and training opportunities near you.

