

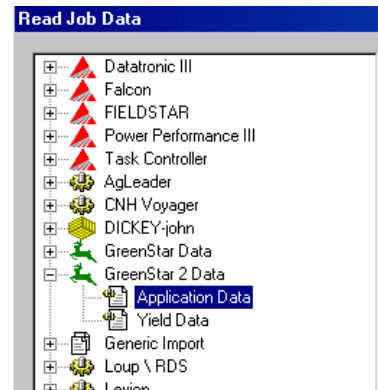
# Importing GS2 Data

It is recommended that you make a copy of the data on your hard drive. It will make the process faster as the computer can read from the hard drive faster than it can read from a storage card.

To import GS2 application or yield data into Farm Site:

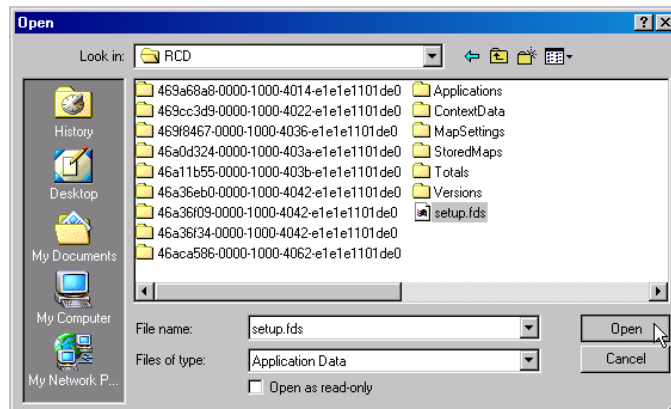
1. Select **Read Job Data** on the **File** menu, or select the **Read Job Data** button on the Job/Resource Tools toolbar.

2. In the left-hand column of the **Read Job Data** dialog box, select the plus sign next to the GS2 and then select the specific data type (either yield or application) underneath it. This will filter the files shown in the right hand side of the box. Only the type of files selected will display.



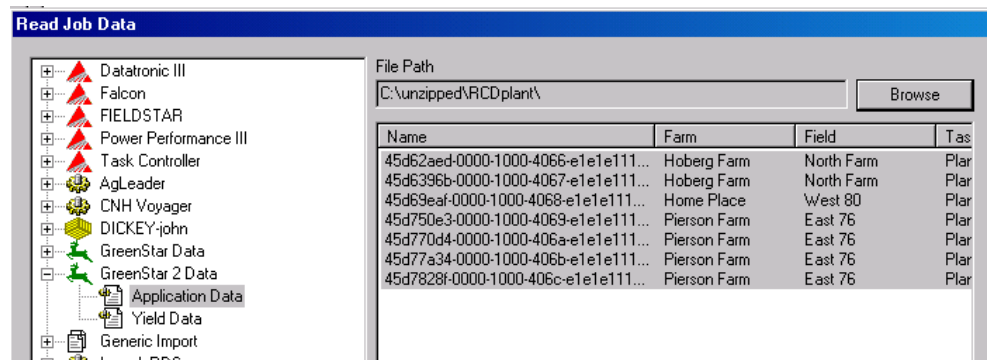
3. Under **File Path**, select the **Browse** button to find the storage card or folder where you saved the yield or application data. With GS2 this should be the RCD folder.


4. In the **Open** dialog box, locate and select the data file called **setup.fds** and click on **Open**. Click ok on any informational messages that may appear.



5. All of the files within the RCD folder that are the same file type will now show in the

**Read Job Data** box. Choose the file(s) to import by highlighting each one. To select multiple files, hold down the **Ctrl** key while selecting.

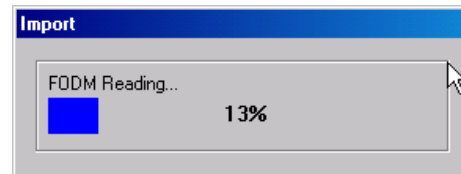


6. Press the  button to filter out any data that might be considered bad data.

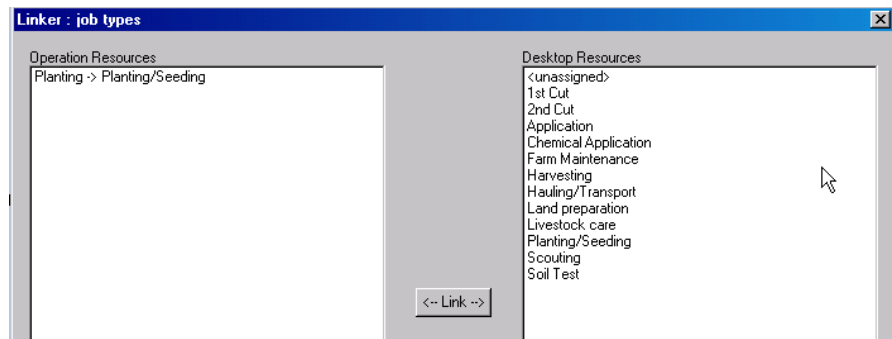
- Place a checkmark in the box beside **Use the harvest filter**.
- Enter values in any of the items to attempt to filter out incorrect data. Minimum and Maximum filters can be set for Grain Flow, Mass Yield, Moisture, and Speed. You can use as many filters as needed, but be cautious about being too strict with a filter. If a filter is too strict, good data may get filtered out.
- These filters can also be modified once the file is imported if needed.

7. Choose the **Delete Fly Away Points** check box to have the program filter out any points that are away from the field because of bad GPS data. It is a good idea to check this box, but with the quality of GPS receivers today, it is rarely needed. If portions of the map are missing after being imported, re-import the data and remove the checkmark in this box.

8. Select **OK** and Farm Site will show the import progress as it reads each of the files.



9. The **Linker** dialog boxes will now appear. These will link resources used during the operation with resources on your desktop computer. Any new fields will be added here as well. For more information on linking resources, see the appropriate section of this manual.



11. Farm Site adds the yield or application maps to the **Jobs** box under the appropriate **Farm** and **Field**. To view the imported map:

- Make sure that **Show Jobs In Land Areas** is checked on the **View** menu.
- Select the **Map** tab.
- Select the **Farm** tab and locate the job under the applicable farm and field.
- Double-click the job with the yield or application data and Farm Site will display the yield or application points data map in the **Map** box.

12. To see the display of a different data type, select the **Layers** tab, select the points layer in the **Displayed Layers** box, and select the data you want to display in the **Views** box. For more information on viewing yield data and modifying views, see the following sections.