

Creating Crop Variety Zone Maps

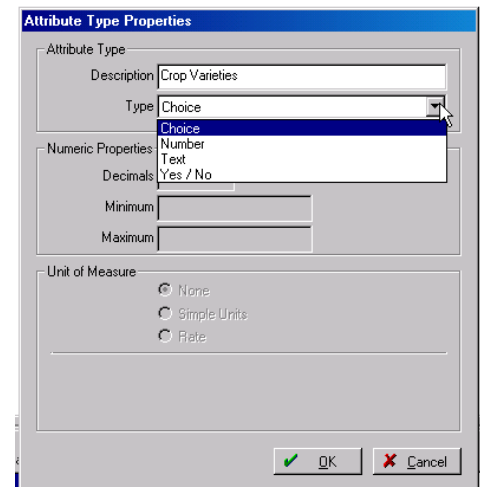
Farm Works Version 2008 and higher will allow users to create variety zones without creating new field boundaries and/or entering field records.

- 1) Create a new Farm, by selecting the Resource Menu and selecting “New Farm”. Enter a name in the Description line and select OK. You will now see the newly created farm in the Tree View on the left hand side of the screen.



- 2) Select the Resource Menu again, click on Attribute Types and click on the Add button. This is where you will set up an attribute for your separate varieties or anything you are wishing to designate a color legend for. For

Example: Enter Crop Varieties as the Description and select Choice for the Type and select OK.

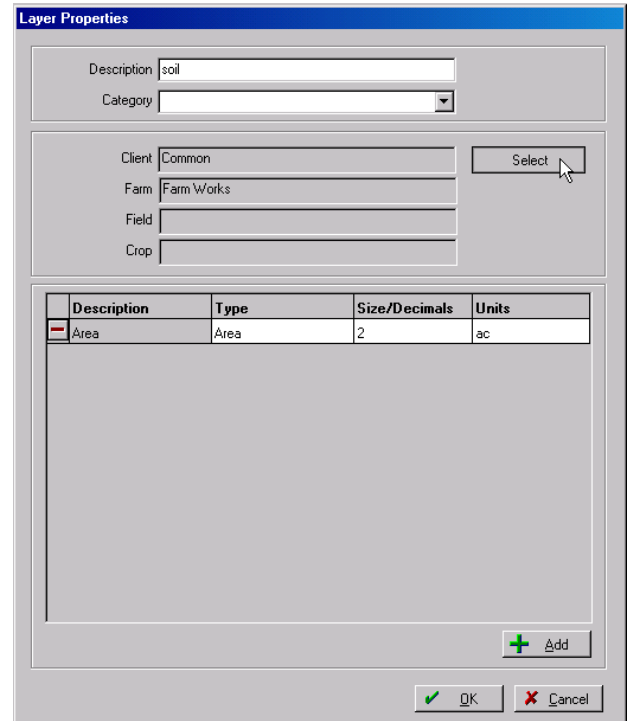


Once we have the farm and attribute types set-up, you can bring in your boundaries that were created using Site Mate or an ArcView Shape File from another source.

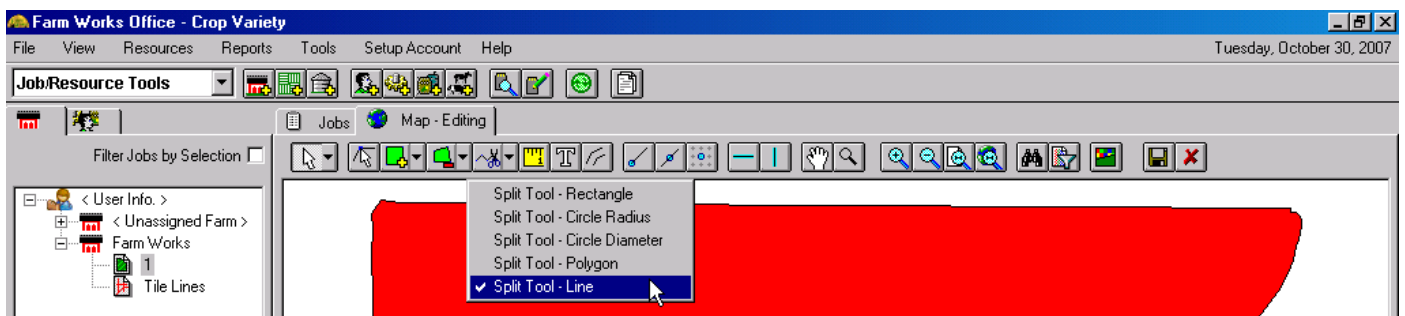
- 3) Use the Synchronize Button to synchronize a boundary file from Site Mate. To bring in a ArcView Shape file, right click on the farm name and select Import Background.

The shape files that are imported in will be displayed in the Tree View on the left hand side of the screen underneath the Farm name. The synchronized files from Site Mate will display under the Unassigned Farm

- 4) Locate the layer with the imported data and right click. Select Properties
- 5) In the properties box you can edit the Description and create a category such as 2007 Boundaries. Click on the Select button and choose the Farm that was created in Step 1.

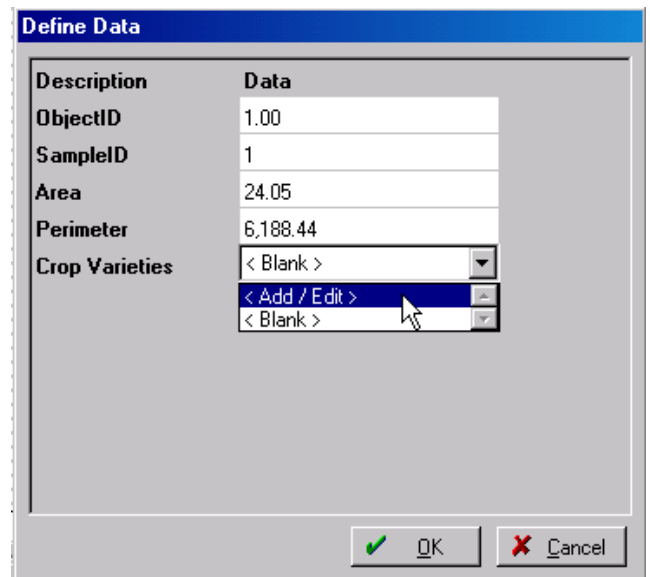


- 6) Select the Add button to add an Attribute. In the Type column, select the Attribute that was set up in Step 2. (The program will fill in the rest of the columns). Add any other Attributes that you want and Select OK.
- 7) Repeat steps 5&6 for any other layers you may have.
- 8) If you have a points layer and an area layer (such as the boundary), make sure the area layer is the first layer listed in the displayed layers section and left click on the Edit Layer button.
- 9) To split the field, select the Split Line Tool by clicking on the drop down arrow next to the Split Tool and select Line. Select the Horizontal or Vertical Tool on the toolbar.



- 10) To draw using the Split Line Tool, click over the boundary line to where the first split is to be and drag to draw a line across the field. Right click and select Finish once the line has been drawn across the field.
- 11) Repeat step #10 for each line split that is needed.
- 12) You can also use the Buffer Tool and create a split that is a set distance or specific area. To use the Buffer Tool, click on a side of the boundary and enter the set area or distance.
- 13) Once the field has been split, select the Pointer Tool and right click inside the first split area and select Properties.

14) In the Properties box you can enter the values for any on the attributes you added, such as Area or Size. The size of the selected split will be displayed in the lower right hand corner of the screen.



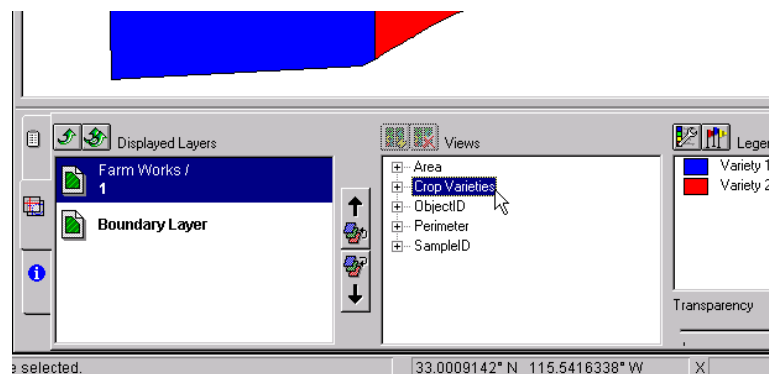
15) Click inside the Data line for Crop Variety and select Add/ Edit to setup varieties or crop needed. Repeat this step for all varieties.

16) Once all the varieties are set up, select the variety from the drop down and select OK.

17) Repeat these steps for each split area.

18) Once all split areas have been defined, select the Save and Close Editing.

19) With the layer saved you can click on the desired attribute in the Views column at the bottom of the Map Tab to see the different varieties and the corresponding legend.



20) To change the colors for the legend, select the Edit Legend button and select new colors.