

# Working with Colors and Patterns

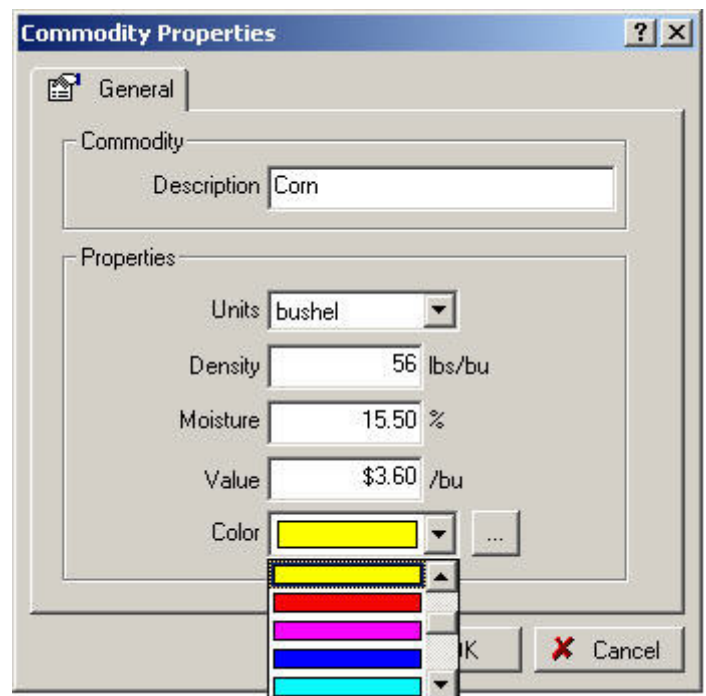
You can assign colors to crops by:

1. Go to the Resources menu and select Commodities.



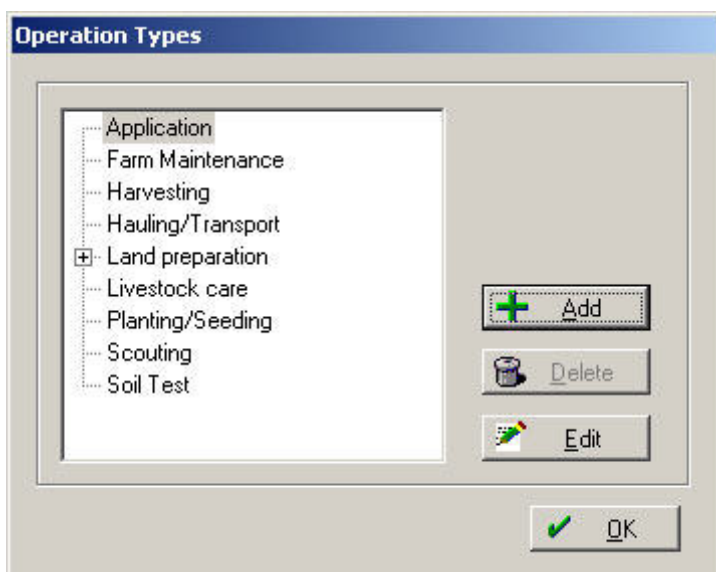
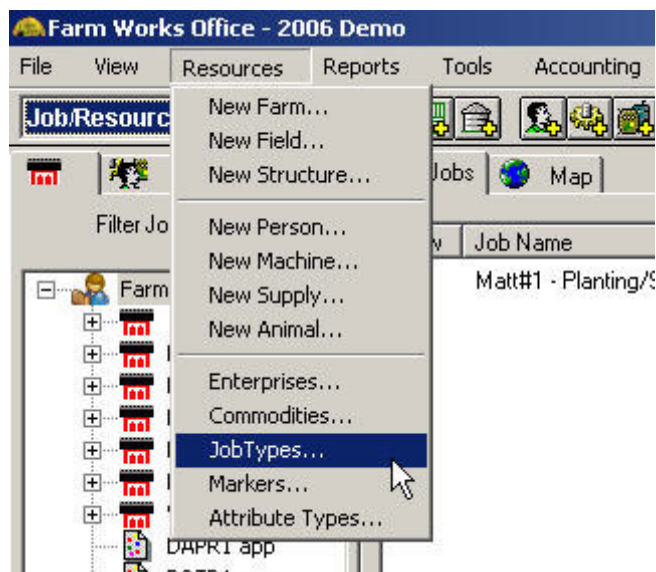
2. Highlight a crop and click on the "Properties" button.

3. Assign the color and click OK.
4. Repeat for each crop.



### Assigning Patterns to Operation Types:

1. Go to the "Resources" menu and select "Job Types".



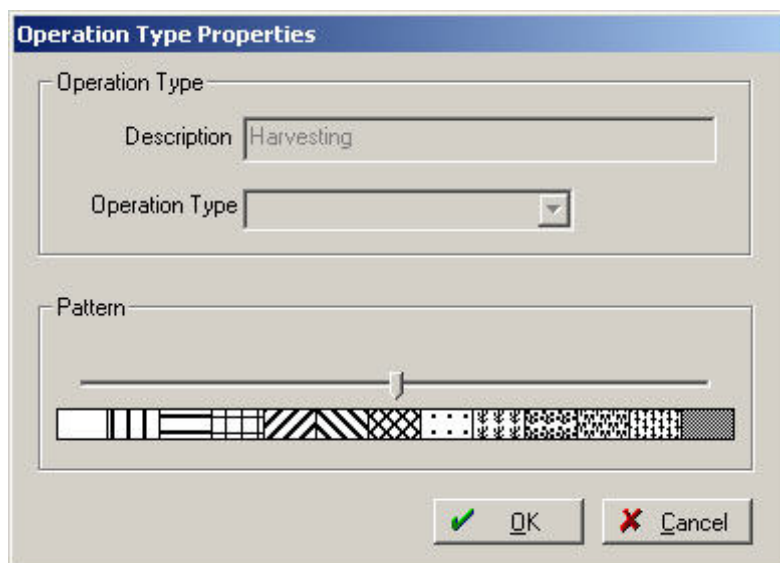
2. In the "Operation Types" box, select an operation that you want to assign a pattern to (such as Harvesting) and select the "Edit" button.

3. Assign a pattern that you want fields to have for that operation.

4. Repeat steps 2 & 3 for each operation that you want a pattern for. This will typically be Planting, Harvesting and Land Preparation.

5. Note that you can add more "Operation Types" by going to the Resources menu and selecting Job Types.

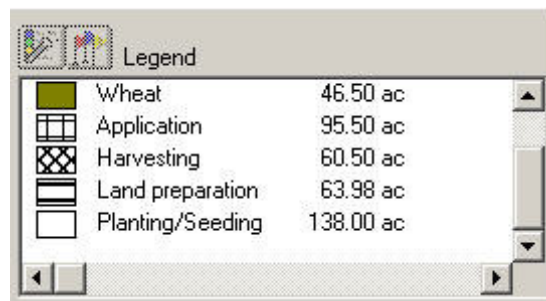
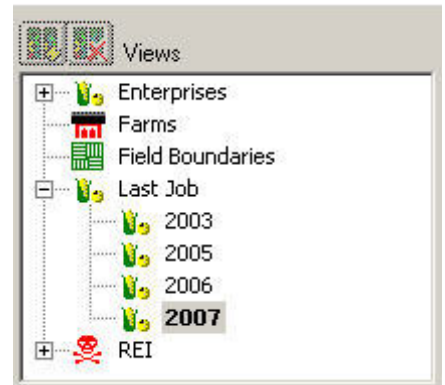
Operation Types are assigned for each farming action by right clicking on the job and selecting the appropriate "Job Type" in the "Farming" box.



**To view a map with Operation Type pattern and crop color:**

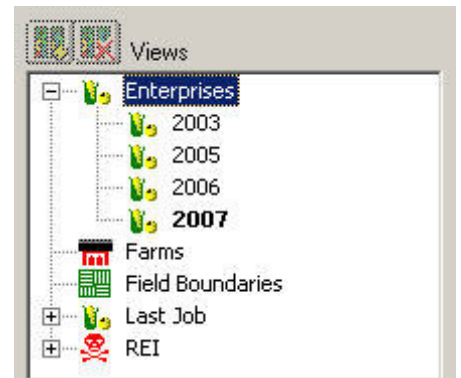
1. Click on the farm, field or project in the tree-view on the left to show field boundaries.
2. Go to the Map tab.
3. In the "Views" area at the bottom of the screen, click on "Last Job" and click on the crop year you're dealing with.

The map will now be colored based on the crops that have been assigned for that year. Additionally, the program will show the patterns for the last job performed on each field for that year, as well as showing the legend of what each pattern designates.



**To view a map for the crops that were planted in the fields for previous years:**

1. Click on the farm, field or project in the tree-view on the left to show field boundaries.
2. Go to the Map tab.
3. In the center area at the bottom of the screen (Views), click on "Enterprises" and click on the crop year you would like to see a map for.



If you need to add or change the "Job Type" or "Enterprise" for any farming action, go to the "Job" tab, right-click on the job, and select "Properties". This will bring up the Farming box so that the changes can be made.

