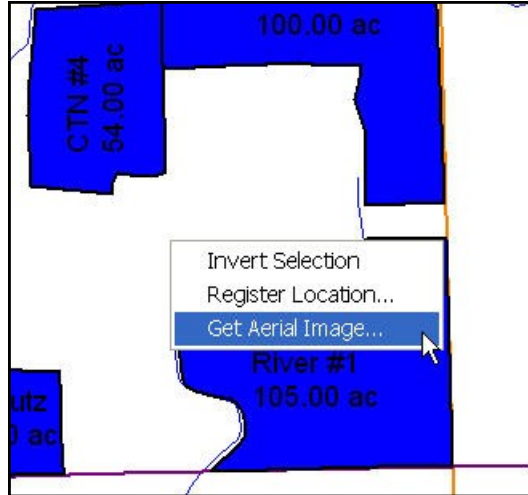


Working with Google™ Imagery

Farm Works has the ability to download Google maps in as background imagery for use within the desktop program. These images can be used to trace field boundaries, or simply as reference maps within the program. The best reference points to use for deciding where to download these images is the road and waterway maps.

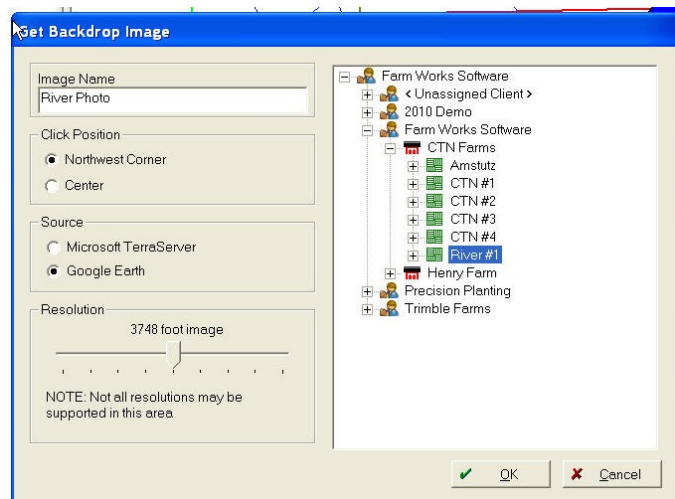


Below are the steps to import these images:

- 1) Right click on the map and select Get Aerial Image.

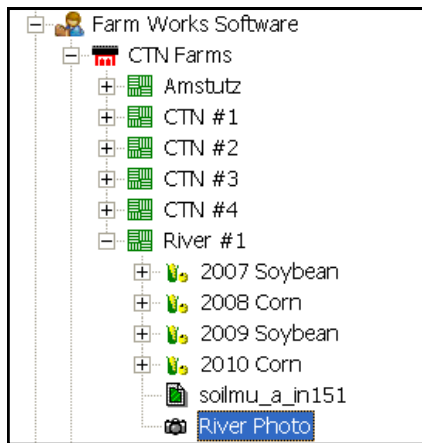
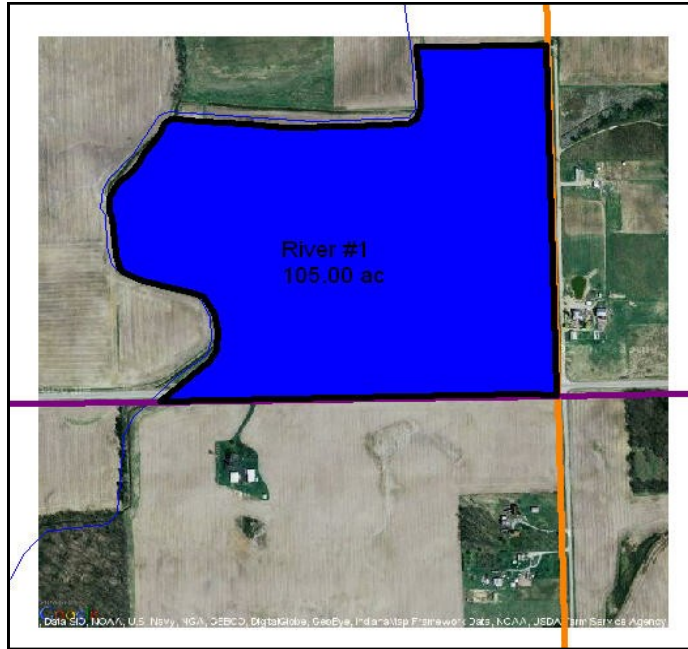
- 2) The Get Backdrop Image screen will appear.

- Fill in the Image Name box with a specific name for this photo region
- The click position will be how the photo will be located in relation to where you clicked on the map (if the click location is to be the top left corner of the image select Northwest Corner.)
- Source: Select Google Earth
- Resolution is the clarity of the image. The lower the size of the image the better the quality, however if you choose higher quality images, you may need to import more than one image to cover the area.
- In the box on the right, select the client, farm, or field that this map relates to (if desired). This is where the image information will be stored in the Barn Tab.
- Click OK

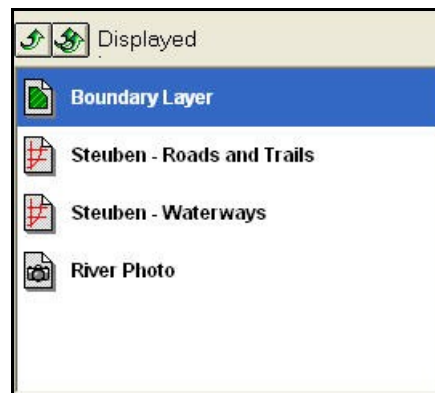


Note: An active Internet connection is required to views these photos. The actual photos do not get saved to the local machine, only the information about the photos including name, resolution, and location is saved.

At the right is how the photo will display on the Map Tab after being imported.



Above is how the photo will display in the Barn Tab after being imported.



Above is how the photo will display in the Displayed Layers while being displayed.