

# FAQs

Version 2010 or higher

## Using Windows Mobile Center with Windows Vista

The Windows Mobile Device Center enables you to setup new partnerships, synchronize content and manage music, pictures and video with Windows Mobile powered devices (Windows Mobile 2003 or later). The Windows Mobile Device Center combines an efficient business-data synchronization platform with a compelling user experience. The Windows Mobile Device Center helps you to quickly set up new partnerships, synchronize business-critical information such as e-mail, contacts and calendar appointments, easily manage your synchronization settings, and transfer business documents between your device and PC. This new version of the Windows Mobile Device Center contains key improvements and new features to support Windows Mobile 6 devices. The Windows Mobile Device Center 6.1 is only supported on Windows Vista.

### **Key updates in Windows Mobile Device Center 6.1 include:**

- Windows Mobile 6 feature support
- Information Rights Management activation - Automatically configure the Windows Mobile 6 device to open IRM-protected documents and files
- HTML mail – Set up your Windows Mobile 6 device to sync HTML-formatted mail
- Certificate Enrollment - Acquire certificates through the PC the Windows Mobile 6 device is currently connected to
- Allow data connections on the Windows Mobile 6 device when connected to the PC
- File synchronization for smartphones – Synchronize files with your Windows Mobile 6 devices, including both touch screen and non-touch screen devices
- Automatic device authentication - Connect the Windows Mobile device to the PC without the need to enter the device-lock PIN every time upon connect
- Product Registration - Register your Windows Mobile device and get connected to information and offers available for your device

### **Download Instructions:**

1. Connect your device to your PC.
2. Download the Windows Mobile Device Center Installer to your PC by clicking on the download [link](#).
3. Select 'Run this program from its current location' and click **OK**.
4. Follow the instructions on the screen.

*Please note: Your device must be connected to your PC for the Windows Mobile Device Center to launch after installation.*

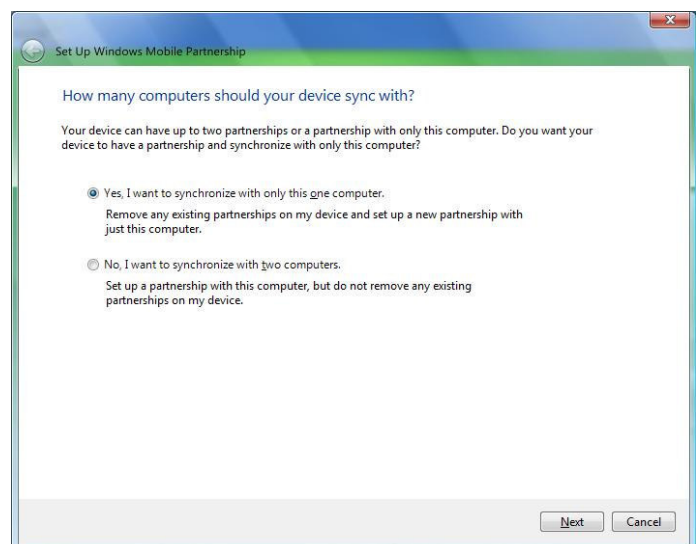
## **Synchronizing Instructions:**

1. Click on "**Set up device**" or "continue without setting up device"

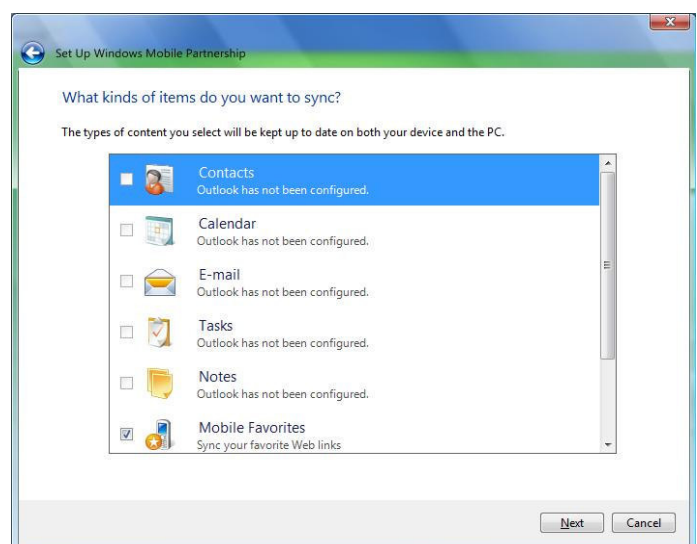


2. If you select "**Set up your device**" the option to synchronize with one or two computers appears, pick whichever option pertains to you and click **Next**.

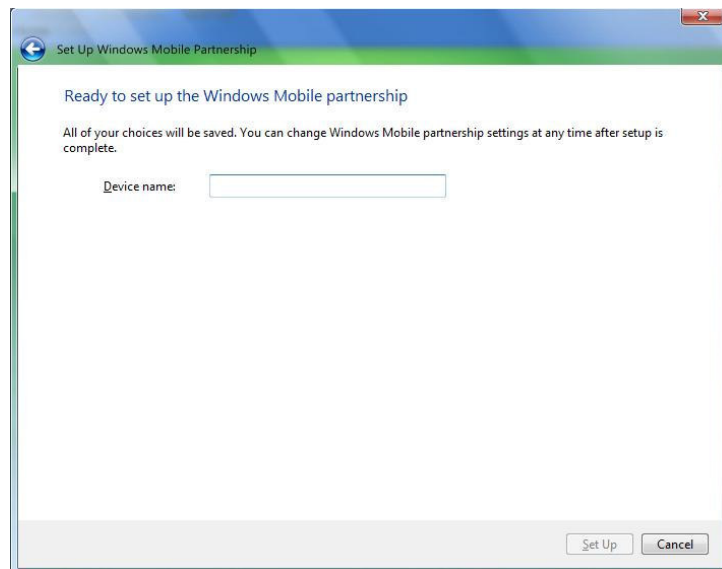
3. If you wish to sync without setting up the device, you will skip the next few steps.



4. After selecting if you are synchronizing with one computer, you must choose what information and files need to be transferred. Select the needed information by placing a check next to the icons. Click **Next**.



5. Now a blank appears in which you can place a device name. Click inside the box and type the name that you wish for the device to be called. Click on **Setup**.







6. A screen will appear displaying the status of the partnership. When the partnership is complete, the next screen shows that the device is connected and synced.



*Please note: In the past, when searching for your mobile device in windows, it was named "Mobile Device". However, now, it can be found under the name that was typed in the box in the setup process. If you right click start, and select Explore, you can scroll till you locate the device name that you entered previously in the setup process.*

Farm Works Information Management  
A Division of Trimble  
P.O. Box 250  
Hamilton, IN 46742  
USA  
[www.farmworks.com](http://www.farmworks.com)



 +1 800-282-4103  
 +1 888-309-4990  
 +44 1786-465100  
 +1 260-488-3492

