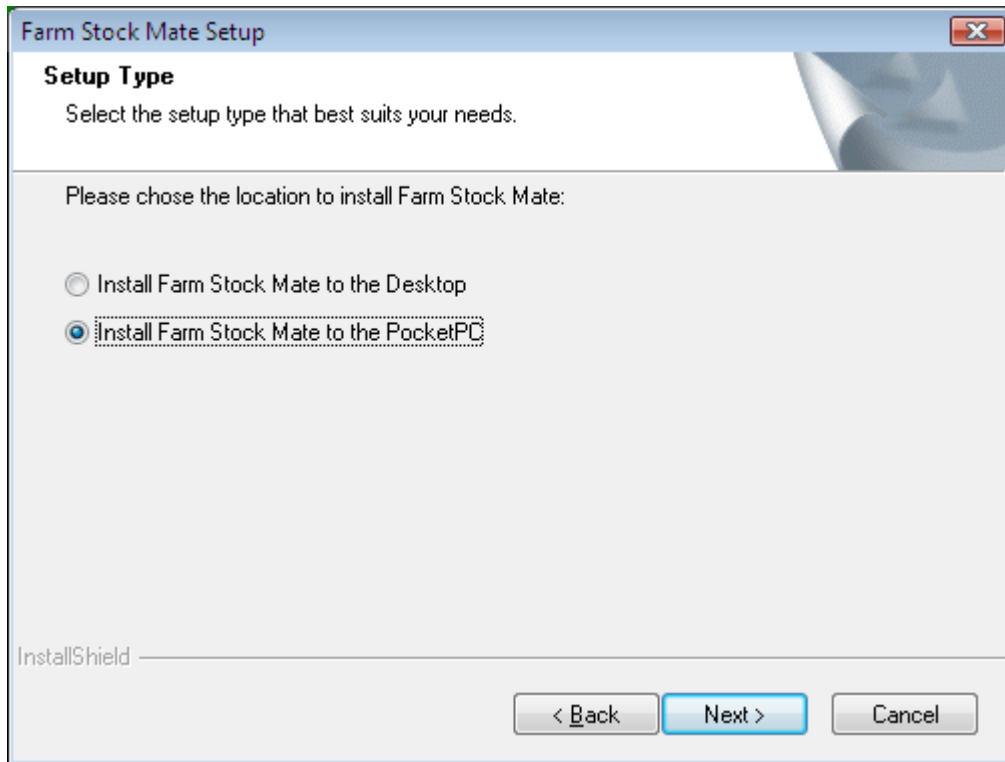


Instructions to manually install Stock Mate

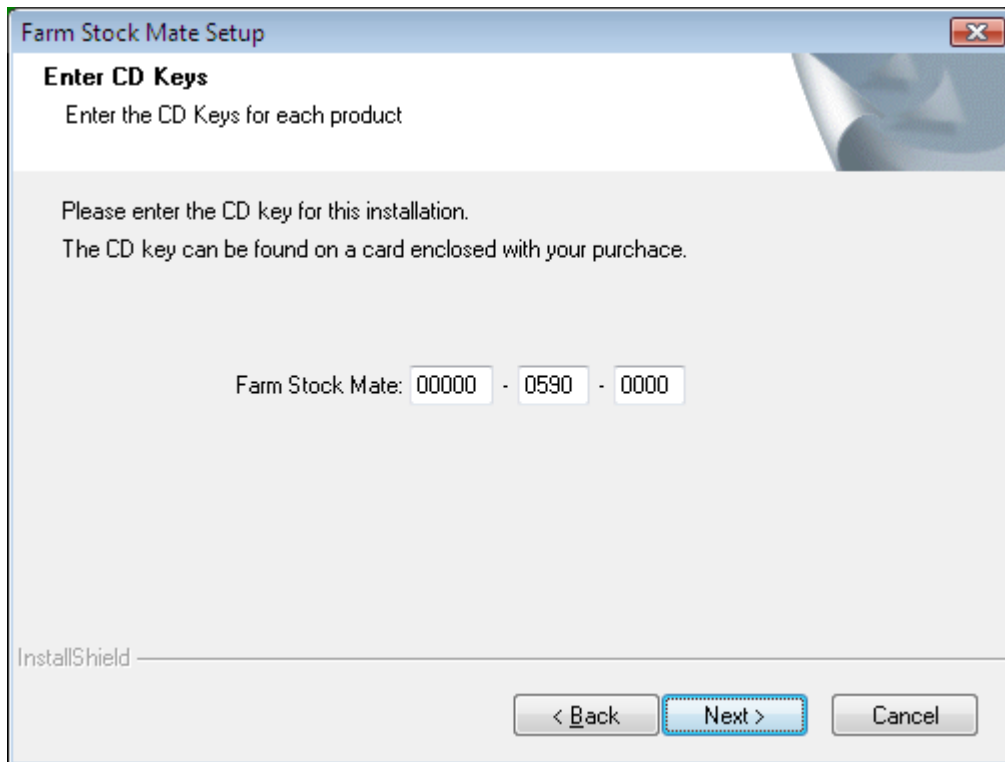
Certain combinations of Windows Vista, anti-virus software and PocketPC devices occasionally have difficulties automatically installing Stock Mate using the Farm Works installer.

This step-by-step guide takes you through a manual install.

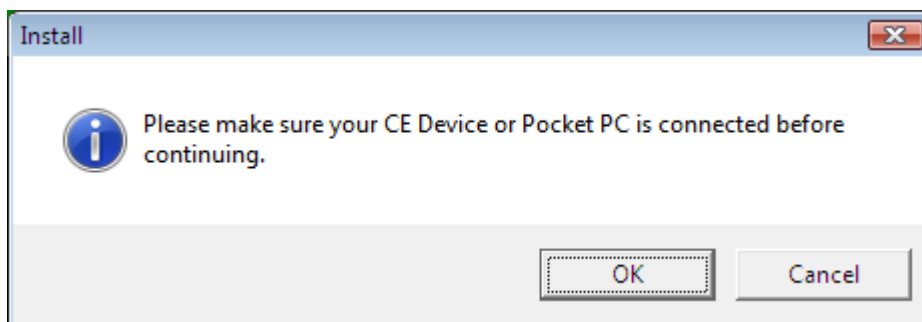
1. Insert the Farm Works CD and choose to install Stock Mate.
2. After you have read and agreed to the licence terms you will reach this screen:



3. At this screen choose the PocketPC installer (as above) and click the 'Next' button.



4. This screen prompts you for your CD Key. Enter the keys supplied to you by your dealer.
5. The next thing you will see is this information box:



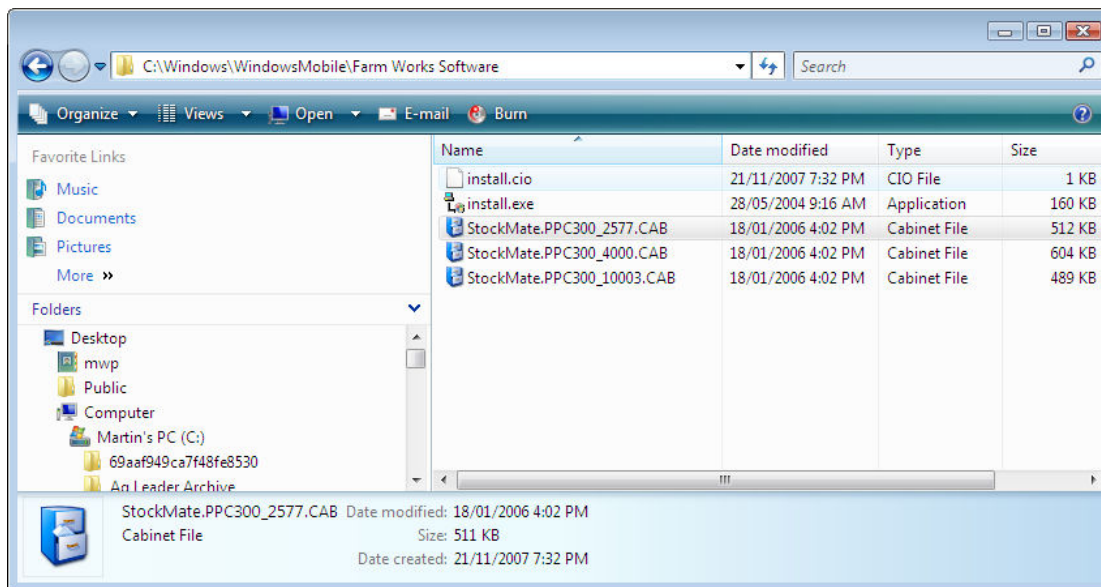
If you have been having problems with previous installs, click the 'Cancel' button at this stage.

6. Next open Windows Explorer on your PC. (Click the start button, then right click 'Computer' or 'My Computer' and choose 'Explore')

7. Browse to the directory :

C:\Windows\WindowsMobile\Farm Works Software

you will have a window looking like this:

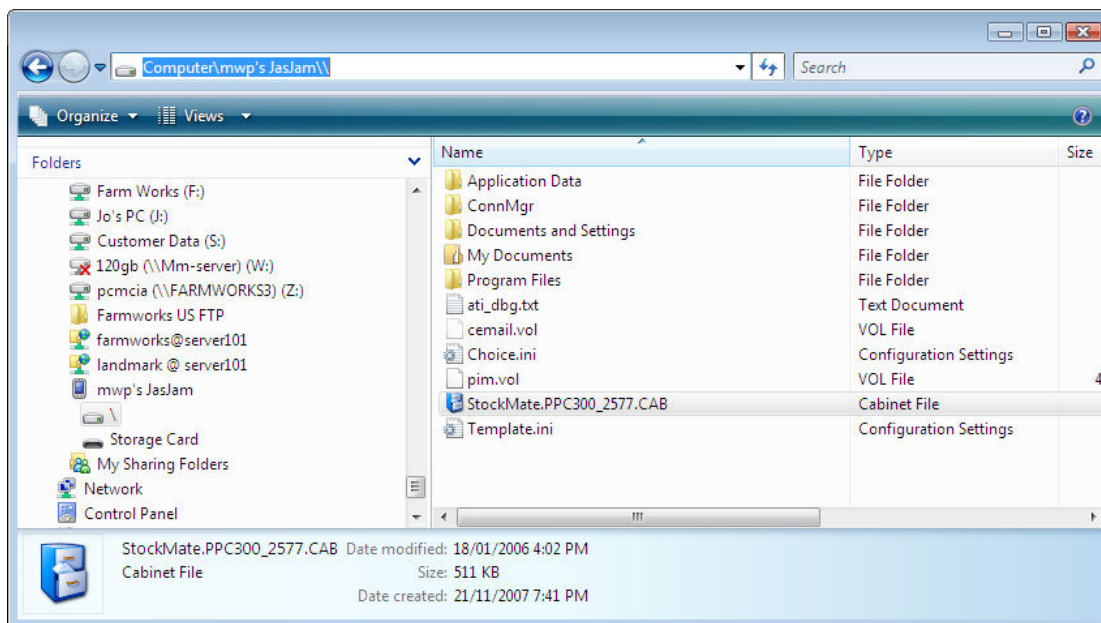


Find the file called **StockMate.PPC300_2577.CAB**

8. Right Click on the above file, and choose 'Copy'

9. Make sure your PocketPC is connected and synchronised with your PC

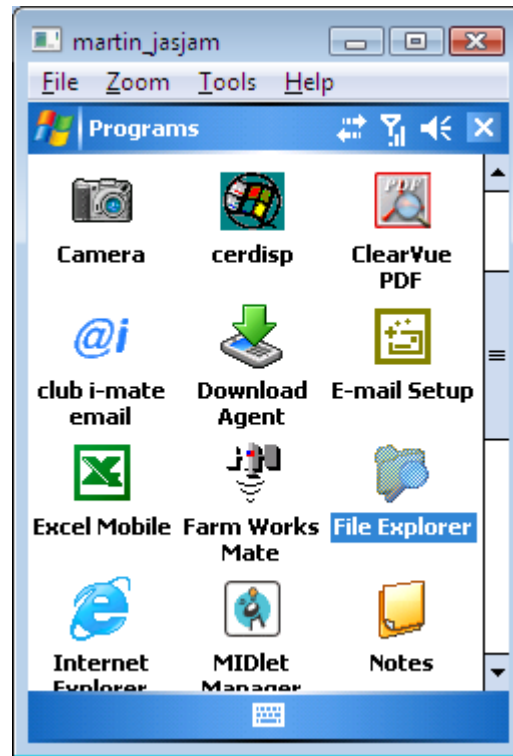
10. Using Windows Explorer (on your desktop PC) browse to your PocketPC device. It will look like this:



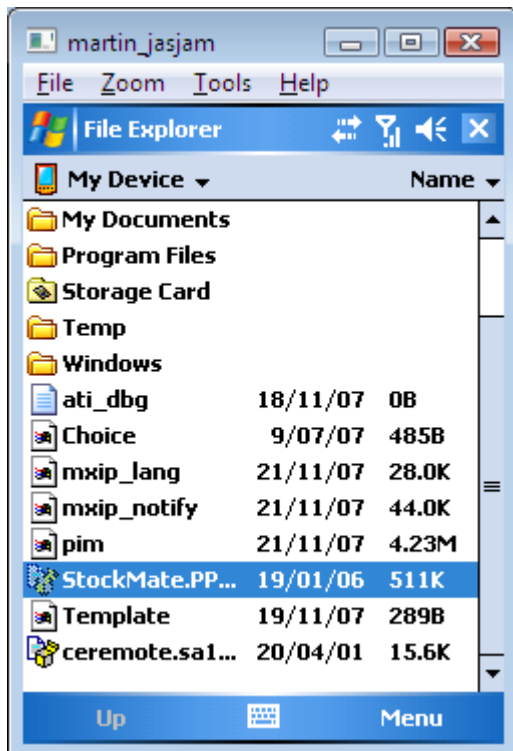
11. Right click in the root directory of your device and choose 'Paste'. This should place a copy of the file **StockMate.PPC300_2577.CAB** on your device.

12. Now remove your PocketPC from its cradle or sync lead

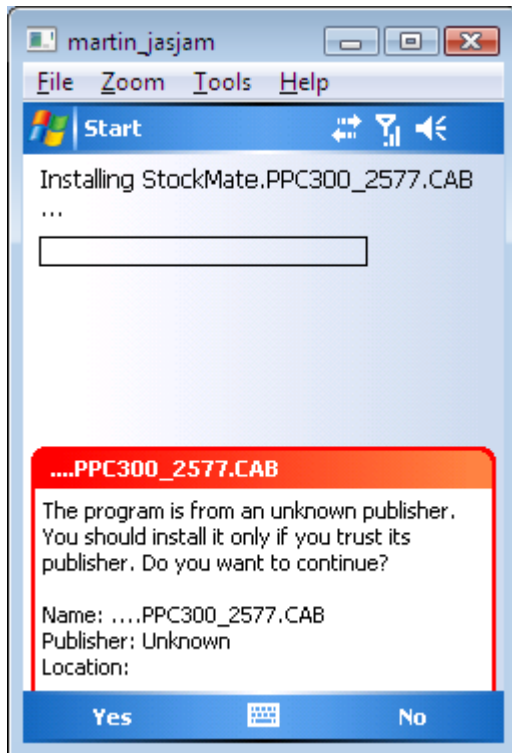
13. Click the 'start' button then 'programs':



14. Tap on 'File Explorer' then look in My Device to find the file StockMate.PPC300_2577.CAB that you copied from the desktop PC

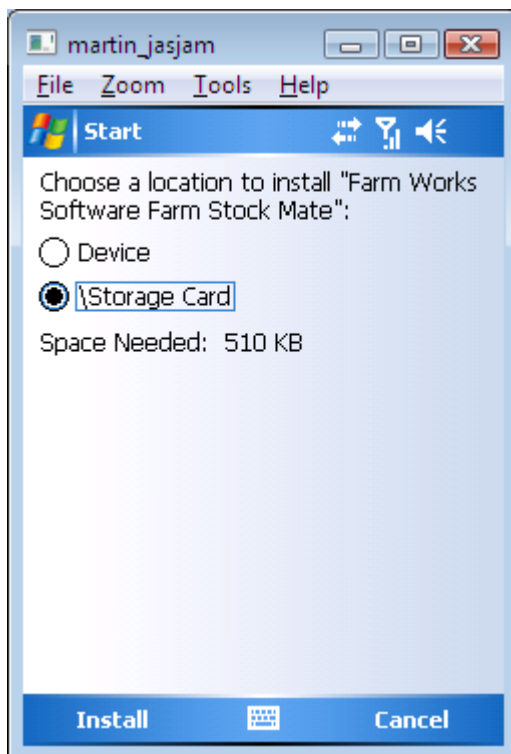


15. Tap on this file, windows will prompt you with this message:

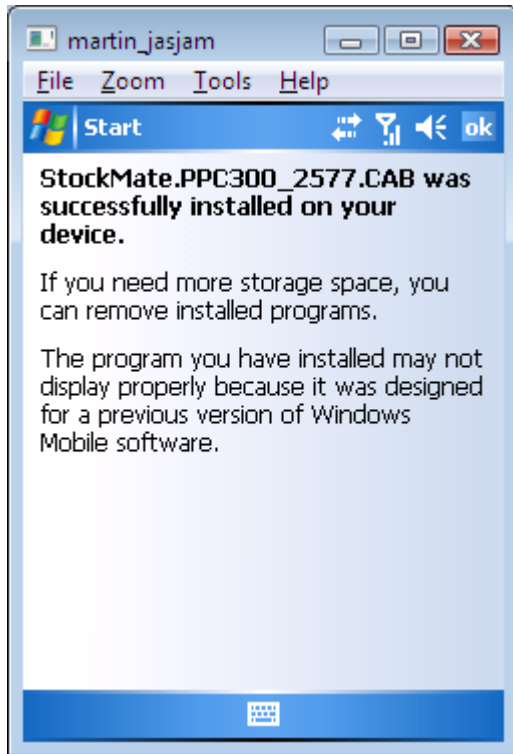


Tap 'Yes' to install Stock Mate.

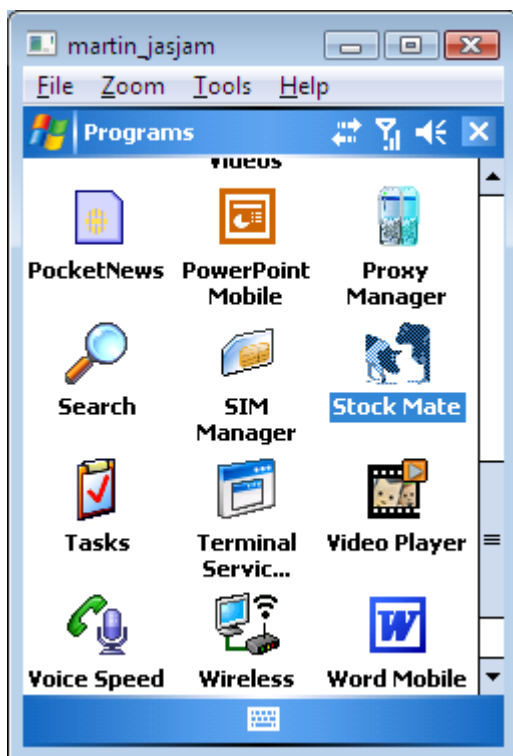
16. You will then see this screen. If you have a storage card in your device, it is recommended to choose that option:



17. After a few seconds you will see this screen which shows you have been successful. Tap 'ok' in the top right corner to exit.



18. Returning to the programs screen, you should now have an icon for Stock Mate. Tap this icon to launch the program.



19. Finally, you will have to register Stock Mate. This is the registration screen:



Enter the 3 sets of 4 digits that make up your Stock Mate CD Key. This was provided to you when you purchased the software.

20. Visit www.farmworks.com/register or call Farm Works, and provide the first 5 digits of your CD Key and the Machine ID from the registration screen.

Farm Works will provide you with a registration number unique to your PocketPC. Enter this number in the Registration # box and tap OK. You will see the following screen indicating that the program is installed and ready for use:

