

## Working with Digital Images

The 2010 version Site Mate Scouting and Site Mate VRA, has the ability to capture an image that can be assigned to a specific point, path or boundary log file. The Image feature will work with most built in cameras on handheld devices (such as the Trimble Juno, Nomad and Yuma). If a device does not have a built in camera, an image can still be assigned.

### To use the digital image feature:

Using the digital image feature requires that a database template with an Image attribute be set up first.  
Creating a Database Template:

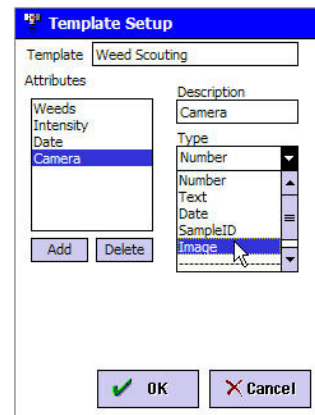
- 1) Select **Configure > Logging > Database Templates**, to access the Database Templates set up.
- 2) The program will display all the templates that have already been set up within Site Mate. Select **New** to create a new template.
- 3) Enter a template name, and select **Add** below the attributes window.

- 4) Highlight the new attribute, so that the attribute name is listed in the Description box to the right.

- 5) Select the drop down arrow under the Type box, and select **Image**.

- 6) Any other attributes that are needed can also be assigned here, by completing the above steps.

- 7) Select **OK** once all the attributes have been added. The program will prompt you to save the template as a job type. If you are using the Automatic File Naming feature, select **Yes**.



- 8) The program will add the new template name to the list of Job Types.

### Creating the Job:

- 1) On the Jobs Tab select **New Scouting Job**.
- 2) If using Automatic File Naming select the correct Client, Farm and Field and select **OK**. If Automatic File Naming is not being used enter a file name and select **OK**.

- 3) Select the correct **Crop** and **Job Type** if using the Automatic File Naming, (the job type will be the template name that was set up previously). Select **OK** to continue. If Automatic File Naming is not being used select the correct template and select **OK**.
- 4) When using the manual logging feature (usually used for logging points), once you select Go to begin logging, anytime that the **Log** button is selected the Properties Box will appear. If using automatic logging feature, anytime the **Stop** button is selected the Properties Box will appear.

Properties	
Latitude	041° 32' 47.502"
Longitude	084° 54' 15.084"
Altitude	0.00 ft
Image	Set Image

- 5) In the Properties box, select the **Set Image** option.
- 6) The next screen will be the Image Options screen. On the Image Options screen there will be several options:



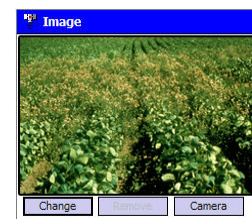
- a. **Change** – Displays an “Open File” box where an image that is stored in the memory or hard drive of the device can be selected.
- b. **Camera** – If the device being used has a built-in camera that the software recognizes (such as those included with the Trimble Juno, Nomad and Yuma), this will activate the camera
- c. **Remove** – Select this option and the captured image will be removed.
- d. **OK** – Saves the image so it will be linked to the feature that was mapped.
- e. **Cancel** – Cancels any images that were captured or selected and brings up the attribute Properties box.

- 7) Select **Camera** Option in the Image Options box, to activate the built in camera. Selecting



the Camera button will also activate the built in camera.

- 8) To capture the image us the camera button on the device itself.
- 9) Once the image is captured, you will be taken back to the Image Options box and the image will be displayed.



- 10) Select **OK** to accept the image, the next screen will be the Properties box click OK to return to the mapping screen.

